

ADDENDUM NO. 3
TO
CONTRACT DOCUMENTS
FOR
CITY OF MANISTIQUE
MARINA RENOVATION PROJECT – PHASE II
JULY 16, 2018

Contractor shall list all addenda by number on the bid form to ensure conformity in the bid.

Drawings, Specifications and/or Proposals are herein amended, expanded and/or modified, as hereinafter described, and become a part of the Contract Documents with the same force and effect as if incorporated, therein, originally. Any contrary provisions contained, or referred to, in Drawings and/or Specifications, shall remain applicable unless overridden by this Addendum. Revised or contrary provisions herein shall not affect any other part of the Contract Documents and any deletions, additions, substitutions and/or revisions mentioned, shall include all labor, materials, methods, modifications, etc. required for complete performance of the work.

This Addendum No. 3 consists of 4 pages.

Information provided in this addendum supersedes any information provided on the same topic in previous addenda.

CLARIFICATIONS

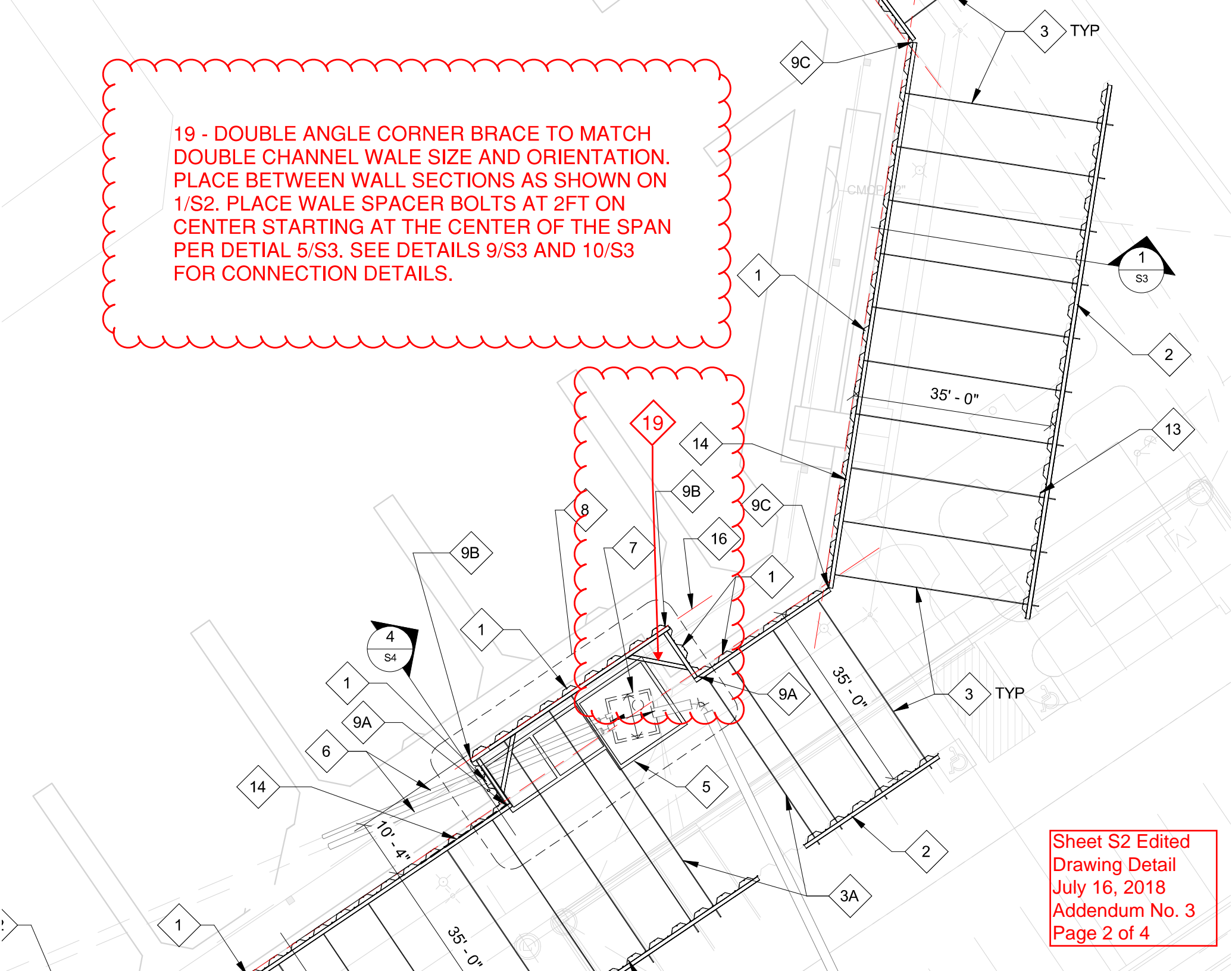
1. Maximum tie-rod spacing on the sheet pile wall is 9'-6".
2. Sheets are to be as called out in the Sheet S2 keynotes; a cold formed sheet is acceptable.

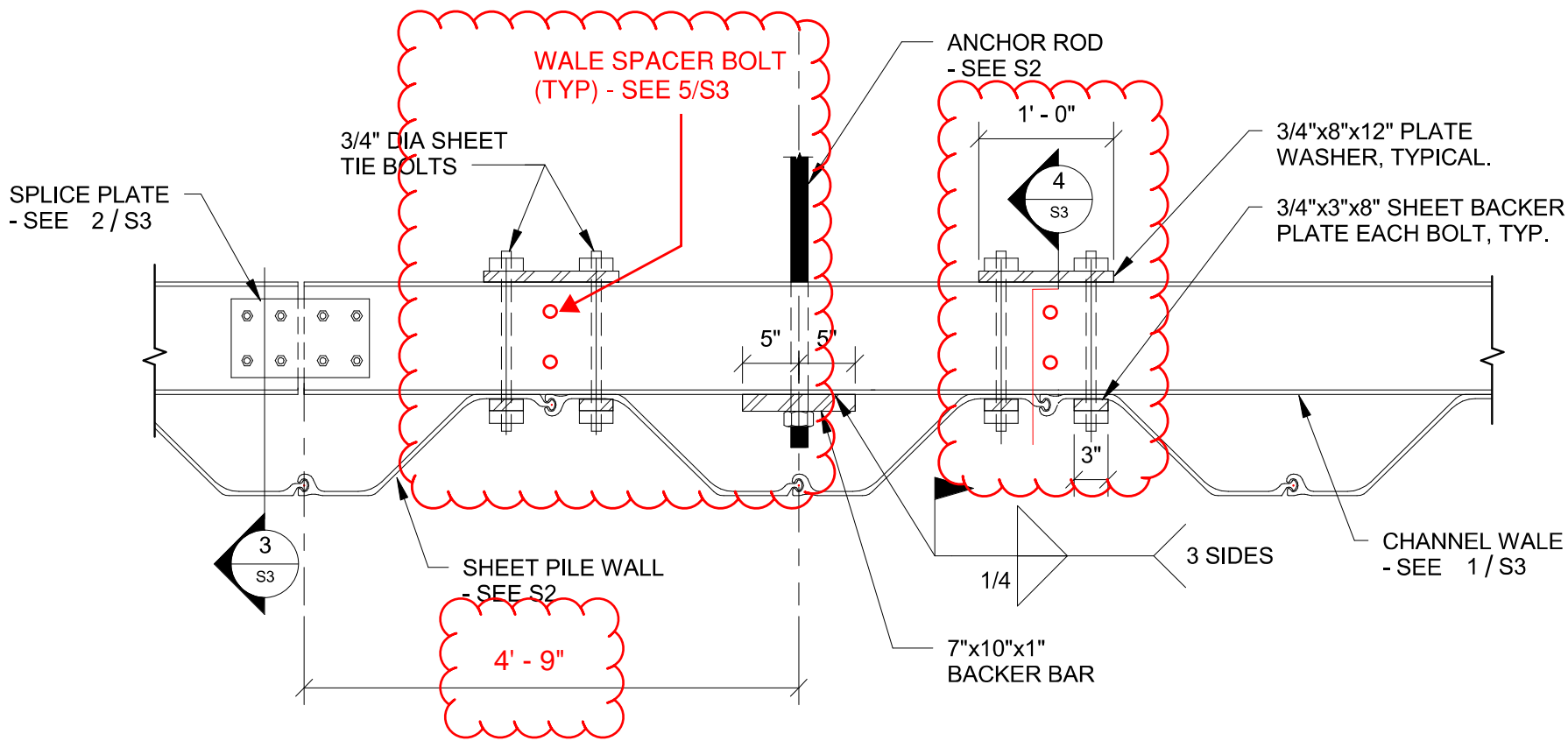
PLAN SHEET CHANGES

These drawing details amend the original drawings and replaces the 2103 Marina Project (2103-S2) drawing provided in Addendum No. 2.

1. Plan Sheet S2: Edited drawing detail provided in bump-out area.
2. Plan Sheet S3: Revised Detail 6/S3 indicates wale spacer bolt and revised dimension.
3. Plan Sheet S3: New Detail 9/S3 – Return Wall Corner Brace Detail.
4. Plan Sheet S3: New Detail 10/S3 – Brace Connection Detail.

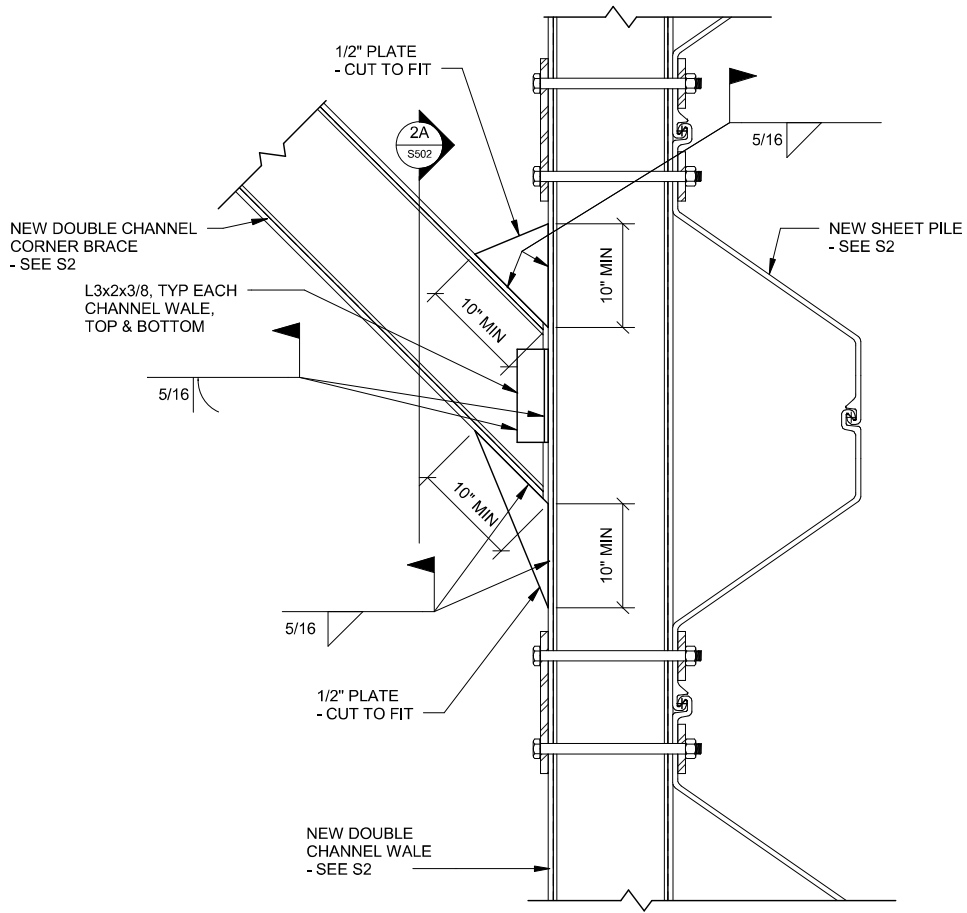
19 - DOUBLE ANGLE CORNER BRACE TO MATCH
DOUBLE CHANNEL WALE SIZE AND ORIENTATION.
PLACE BETWEEN WALL SECTIONS AS SHOWN ON
1/S2. PLACE WALE SPACER BOLTS AT 2FT ON
CENTER STARTING AT THE CENTER OF THE SPAN
PER DETIAL 5/S3. SEE DETAILS 9/S3 AND 10/S3
FOR CONNECTION DETAILS.



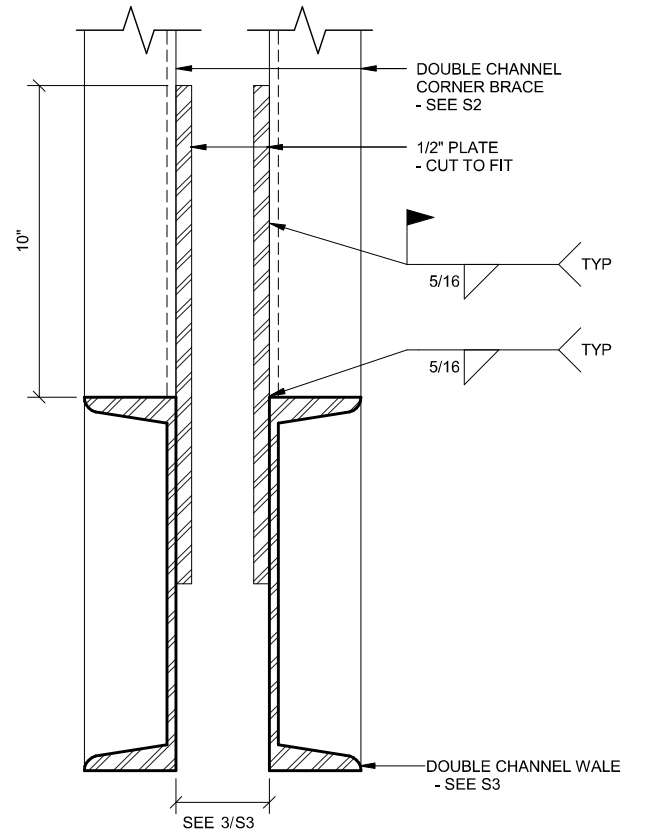


6 SHEET PILE WALL DETAIL
 S3 3/4" = 1'-0"

July 16, 2018
 Addendum No. 3
 Page 3 of 4



9 RETURN WALL CORNER BRACE DETAIL
 S3 1" = 1'-0"



10 BRACE CONNECTION DETAIL
 S3 3" = 1'-0"