

**ADDENDUM NO. 1
TO
CONTRACT DOCUMENTS
FOR
CITY OF MANISTIQUE
MARINA RENOVATION PROJECT – PHASE II
JULY 9, 2018**

Contractor shall list all addenda by number on the bid form to ensure conformity in the bid.

Drawings, Specifications and/or Proposals are herein amended, expanded and/or modified, as hereinafter described, and become a part of the Contract Documents with the same force and effect as if incorporated, therein, originally. Any contrary provisions contained, or referred to, in Drawings and/or Specifications, shall remain applicable unless overridden by this Addendum. Revised or contrary provisions herein shall not affect any other part of the Contract Documents and any deletions, additions, substitutions and/or revisions mentioned, shall include all labor, materials, methods, modifications, etc. required for complete performance of the work.

This Addendum No. 1 consists of 3 pages.

This addendum addresses two items: The Floating Pier Pre-bid Qualification Manufacturer to date, and the addition of a sidewalk support at the sheet pile wall. The sidewalk support affects Pay Item – Sidewalk, Conc, Modified, 4-Inch, and Pay Item – Sheet Pile Wall.

PRE-BID QUALIFICATION

The following manufacturer has submitted a prequalification package according to Section 35511.1.03 of the specifications and has been approved to manufacture an acceptable Floating Pier System:

Flotation Docking Systems, Inc.
P.O. Box 178
160 Hodeck Street
Cedarville, Michigan 49719-0178
(906) 484-3422
www.flotationdocking.com

TECHNICAL SPECIFICATION CHANGES

SECTION 01025 – MEASUREMENT AND PAYMENT REVISIONS

Changes or additions were made to the following Bid Items of Section 01025 – Measurement and Payment:

Item 13 has been modified to include the additional sidewalk thickened edge at the sidewalk support attachment to the sheet pile wall cap according to revised plan sheet No. 21 attached as part of this Addendum.

13. SIDEWALK, CONC, 4-INCH, MODIFIED

- a. Measured by the unit Square Foot.
- b. Payment shall be in accordance with Section 803 of the latest version of the Michigan Department of Transportation Standard Specifications for Construction. Payment also includes reinforcement, expansion material, sealant, grading as necessary for ADA compliance and positive drainage; protection during curing; furnishing and applying curing compound; coordination with other contractors so positive drainage is obtained between sidewalk and HMA installation; and erosion control. Payment does not include sidewalk ramps. **Payment also includes additional work and material associated with the installation of sidewalk adjacent to the sheet pile wall to accommodate the sidewalk support.**

Item 31 has been modified to include the sidewalk support attachment to the sheet pile wall cap according to revised plan sheet No. 21 attached as part of this Addendum.

31. SHEET PILE WALL

- a. Measurement will be by the unit Lump Sum.
- b. Payment includes all excavation; excavation of rocks smaller than 1 cubic yard and rock that does not require blasting; separating removal and disposal of rocks not suitable for use in backfill; furnishing and installing sheet pile, sheet pile cap, channel wale, wale splicing, anti-wash concrete, anchor pins, tie back wall, anchor rod, rock drilling, rock anchors, attachment to sheet pile, connections, welding, backer bars, splicing, fasteners and all other wall appurtenances; excavation and removal of interference objects, underwater exploration, any modifications or alteration necessary due to field conditions, temporary sheeting and bracing and protection of existing facilities; coordination with Owner, other contractors, and utilities, compliance with all Federal, State and local codes and permit requirements; backfilling, compaction, and all other work necessary for a complete wall installation. Payment shall include all measures necessary for protection of the existing siphon sanitary sewer. **Payment also includes providing and installation of the angle iron sidewalk support to the sheet pile wall cap.**

PLAN SHEET CHANGES

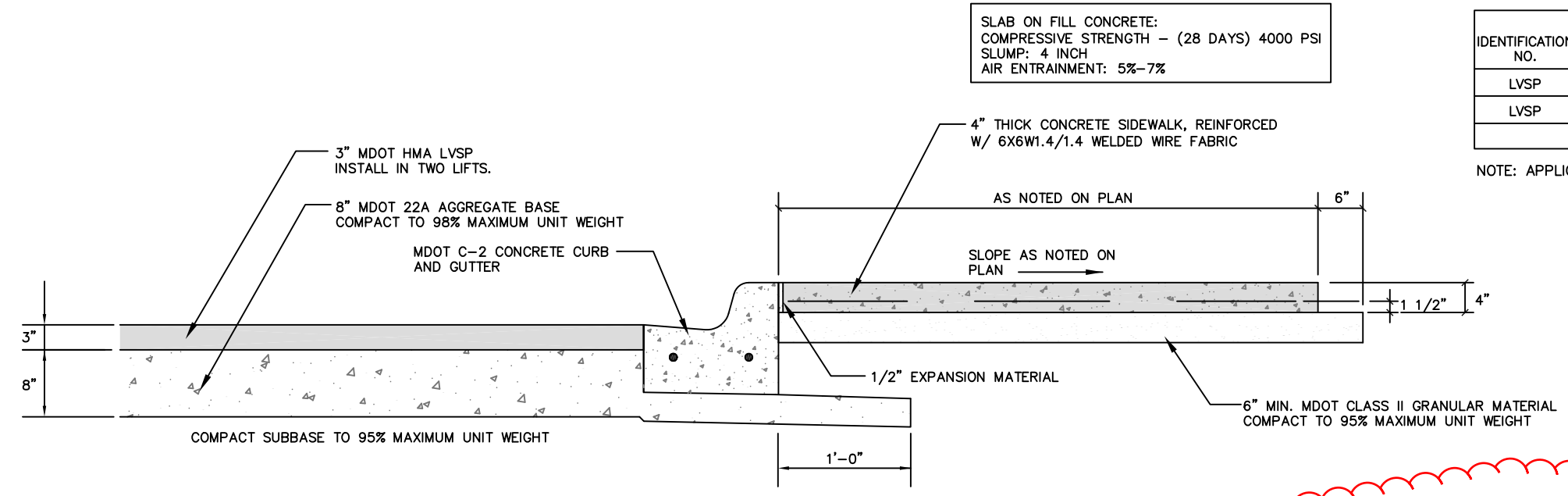
1. Plan Sheet 21 shall be replaced in its entirety with the attached sheet. Changes include modification of the “Sidewalk at Sheet Pile Wall Detail” to include sidewalk support and the addition of a “Sidewalk Support Detail”.

HMA APPLICATION ESTIMATE

IDENTIFICATION NO.	ITEM	APPLICATION RATE (LB/SYD)	ASPHALT PERFORMANCE GRADE	REMARKS
LVSP	HMA MIXTURE LVSP	165	58-34	TOP COURSE
LVSP	HMA MIXTURE LVSP	165	58-34	LEVELING COURSE
	BOND COAT	0-0.1 GAL/SYD		

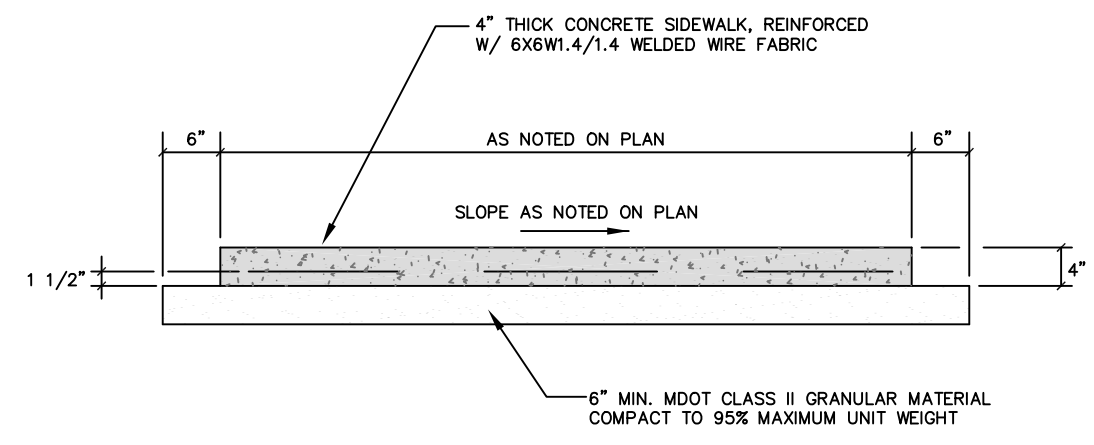
NOTE: APPLICATION RATE OF 110#/SYD. PER INCH OF THICKNESS

July 9, 2018
Addendum No. 1
Page 3 of 3

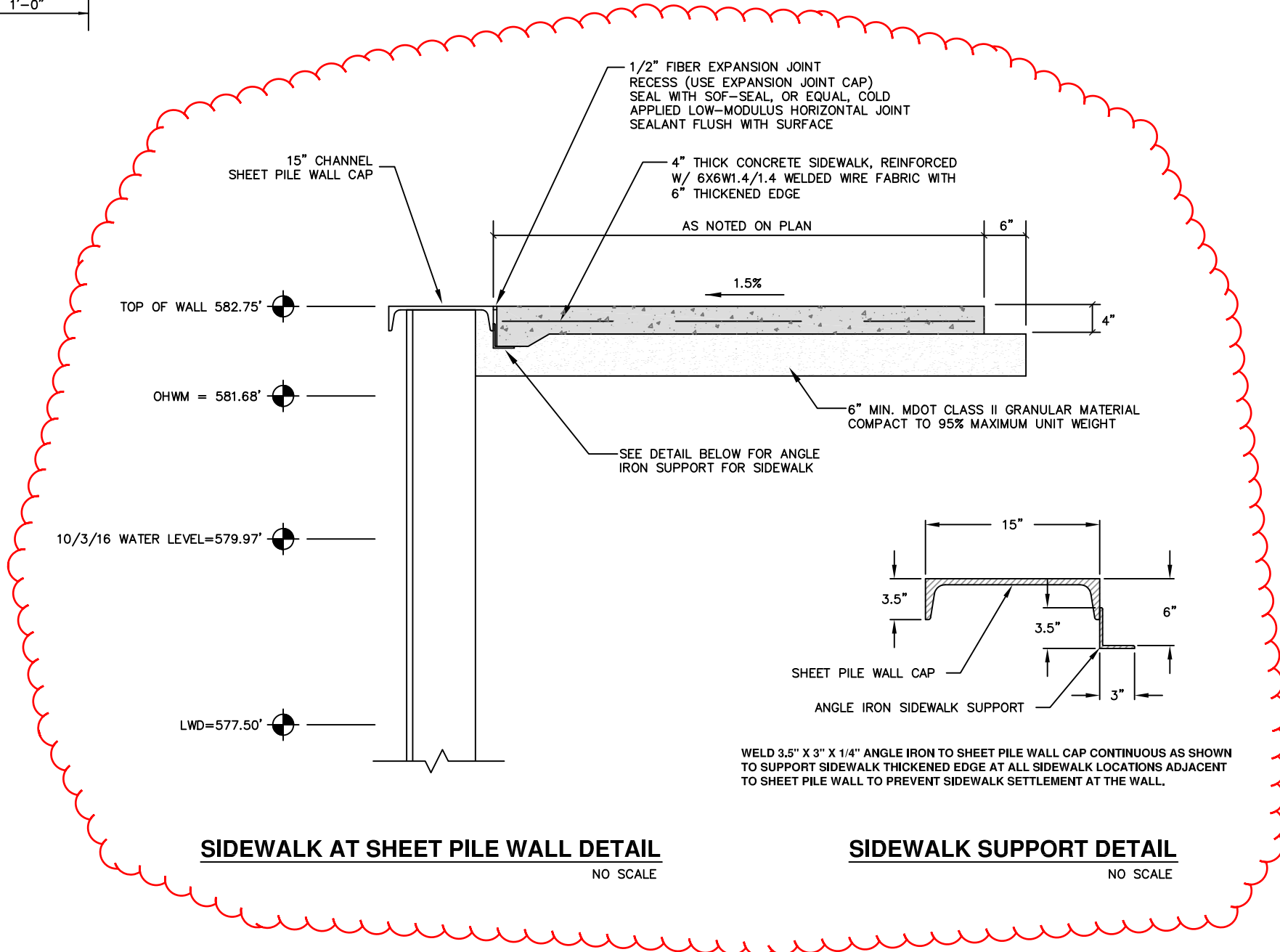


PARKING LOT DETAIL
NO SCALE

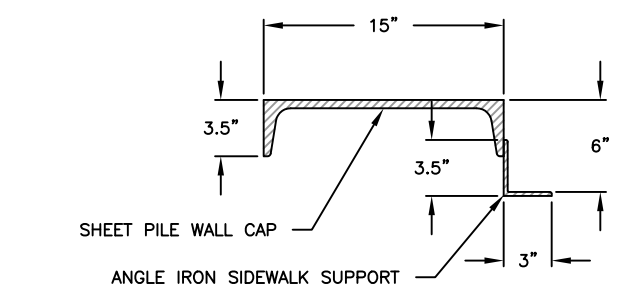
SLAB ON FILL CONCRETE:
COMPRESSIVE STRENGTH - (28 DAYS) 4000 PSI
SLUMP: 4 INCH
AIR ENTRAINMENT: 5%-7%



TYPICAL SIDEWALK DETAIL
NO SCALE



SIDEWALK AT SHEET PILE WALL DETAIL
NO SCALE



SIDEWALK SUPPORT DETAIL
NO SCALE

WELD 3.5" X 3" X 1/4" ANGLE IRON TO SHEET PILE WALL CAP CONTINUOUS AS SHOWN TO SUPPORT SIDEWALK THICKENED EDGE AT ALL SIDEWALK LOCATIONS ADJACENT TO SHEET PILE WALL TO PREVENT SIDEWALK SETTLEMENT AT THE WALL.